

Best Practices- Proper Doorway Guarding


The typical warehouse that Alston constructs has many doorways; both man-doors and dock door openings. Many of these doors adjoin to an elevation change greater than 19". OSHA Regulations state that any elevation change greater than 19" must be protected in order to mitigate any fall hazard that may be posed to a worker.

According to government and industry statistics; slips, trips, and falls account for a large portion of all injuries in the construction industry.

Protection Guidelines:

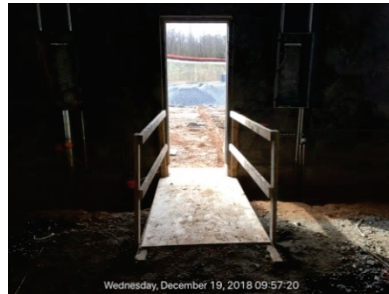
- Know how to identify different types of fall hazards associated with doorways.
- Know and understand how to implement useful guarding techniques.
- Take time every day to ensure any hazardous conditions are mitigated immediately and learn from every occurrence.

Because of the quantity and various types of doorways found on Alston construction sites, we have put together this document to outline some best practices to address the issue of proper doorway guarding. Not only is guarding unprotected doorways a mandatory practice at Alston, its required by OSHA. Ongoing maintenance and supervision is paramount to ensure proper guarding stays in place and in compliance.

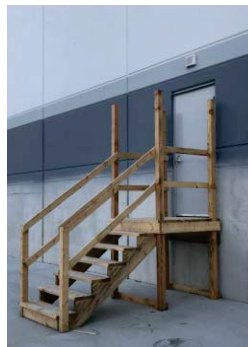
Man Door Guarding Without Steps		
	Good	Bad
<p>A secured sign indicating whether or not the door is a safe means of access/egress is great practice. Flagging may also be used in the event the elevation change does not exceed 6ft. (4ft in WA)</p>		

Man Door Guarding With Steps

All walkways must be a minimum of 28" wide and include railings.



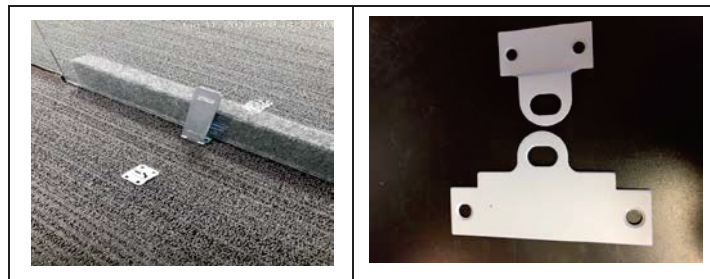
Once the door is installed, the stairs must have a landing at the top. A platform of 20" greater than the door radius is required for outward swinging doors.







Dirt ramps can also be used in order to reduce the break in elevation to less than 19in.



*Don't be afraid to get creative and look for new and innovative products for doorway guarding. Your safety pro is a valuable resource for helping to determine and find potential solutions.



Dock Door Guarding		
<p>Dock doors and incomplete pour back areas are easily guarded with properly installed and maintained flagging.</p>		
<p>The use of stanchions and/or securing flagging material to panel braces are both common and effective practices.</p>		

Commitment and Communication

Slips, trips, and falls from the same level or at elevation are among the most deadly of all construction related injuries. Most falls occur when we stop thinking about safety for just a moment; when we don't accurately assess the risk; or, when we lack the awareness of fall hazards on our sites. Successful injury prevention requires your commitment, participation and communication. Understand and respect the potential hazards; assess the risks associated with each individual site.

Weekly All-hands Safety meetings are an excellent time to make everyone aware of known hazards and to get feedback on the effectiveness of our subcontractors' mitigation plans and techniques.

If you are unsure the best way to guard a particular change in elevation, reach out to your Regional Safety Professional for guidance.

You have a choice; don't compromise your safety to save a few minutes. Respect the risk and guard 100% of fall exposures.

